



and course. In addition, any high school assessment of student learning outcomes that is part of a concurrent enrollment course will be requested from the school and compared with our own assessments.

The prerequisites for university College Algebra classes are two years of high school algebra or





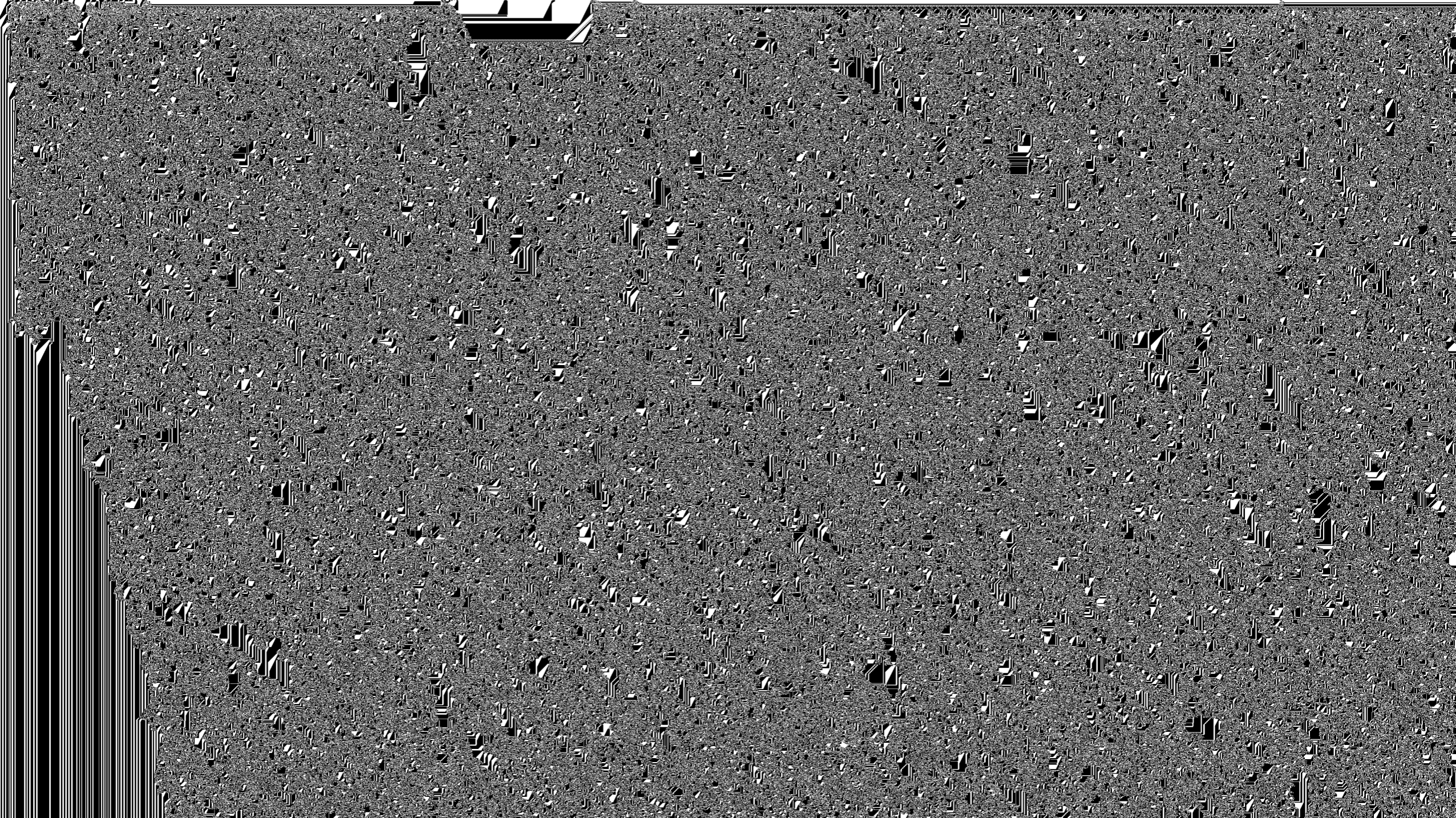




Summer 2007 Percentages with WSU Math 111 Grades

Final Grade Distribution

# of Students	Grade A	Grade B	Grade C	Grade D	Grade F	Drp / Wd	INC	Audit
87	24	19	18	7	10	9	0	0







Spring 2007 Percentages with Concurrent and WSU Math 013 - 111 Grades

Final Grade Distribution

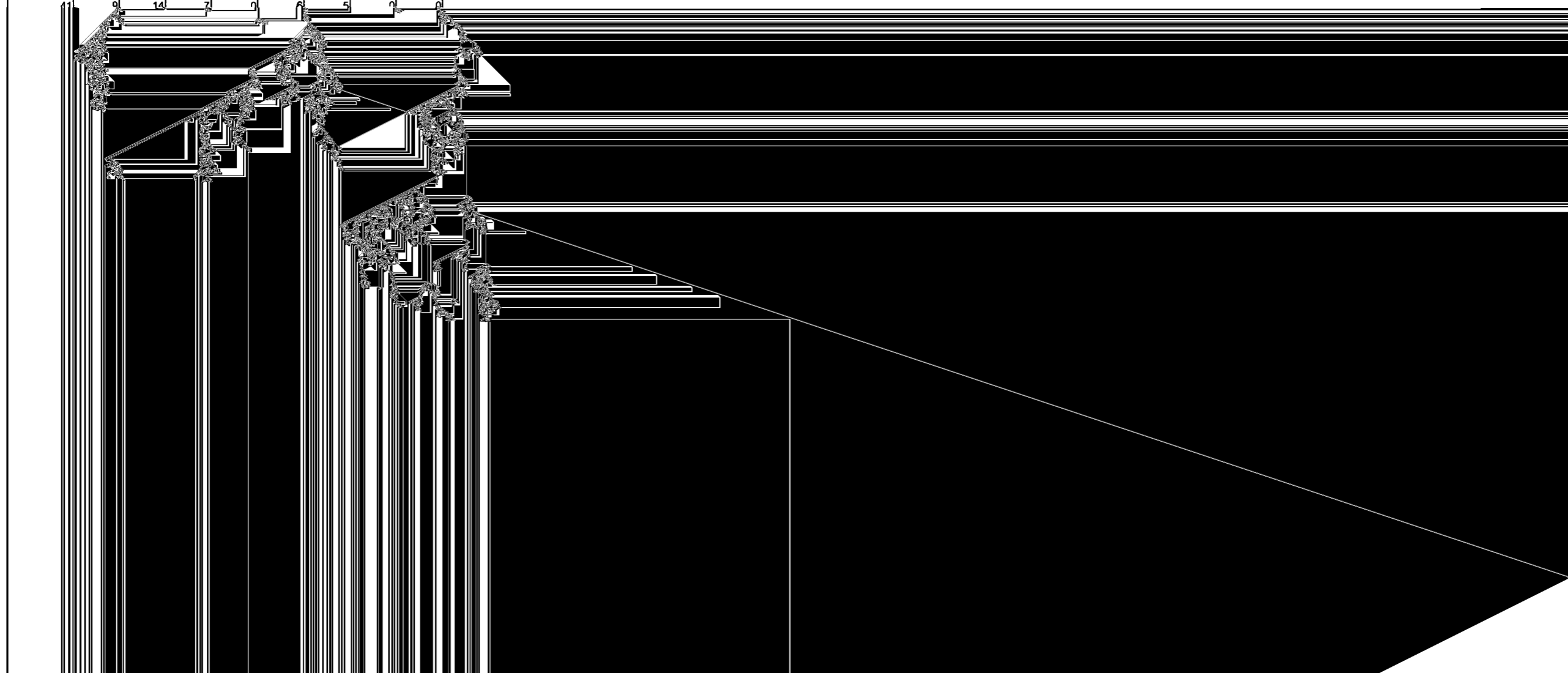
# of Students	Grade A	Grade B	Grade C	Grade D	Grade F	Drp / Wd
592	131	154	104	35	96	72
Passed with C or better: 389						= 66%

Current Qualifying Placement Score	146	= 25%	Current Qualifying Place Score / Passed 111	79	= 54%
Current Qualifying ACT Score	201	= 34%	Current Qualifying ACT Score / Passed 111	136	= 68%
Authorizations	181	= 31%	Authorized & Passed 111	123	= 68%

Percentages with WSU Math 131 Grades

Final Grade Distribution

# of Students	Grade A	Grade B	Grade C	Grade D	Grade F	Drp / Wd	INC	Audit
		14	7	0		5		



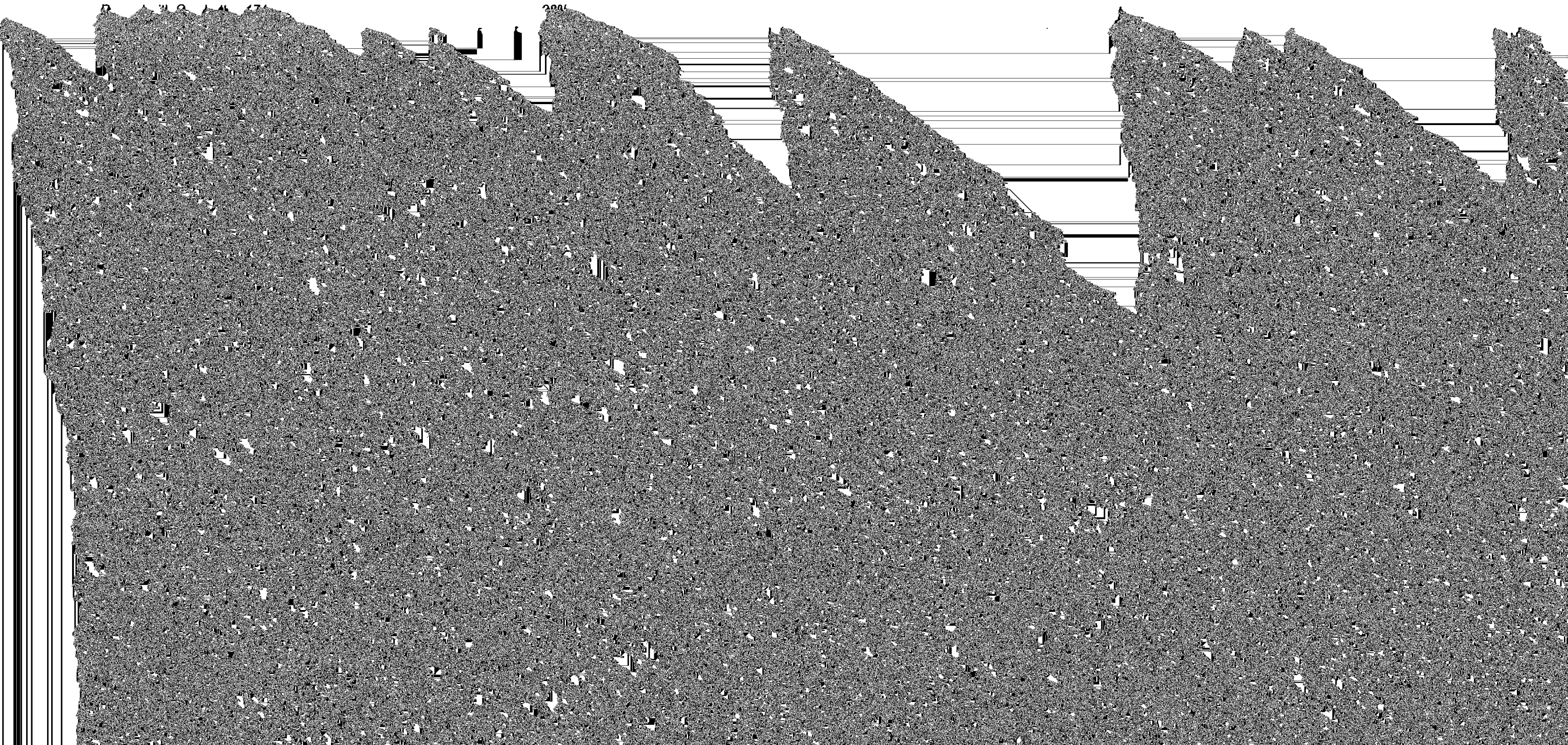




Spring 2008 Concurrent Math 111

Final Grade Distribution

# of Students	Grade A	Grade B	Grade C	Grade D	Grade F	Drp / Wd	INC
181	74	75	25	2	0	5	0



Fall 2007 Concurrent Math 111

Final Grade Distribution

# of Students	Grade A	Grade B	Grade C	Grade D	Grade F	Drp / Wd	INC
33	10	21	2	0	0	0	0

Passed with C or better: 33

= 100%

Spring 2007 Concurrent Math 111

Final Grade Distribution

# of Students	Grade A	Grade B	Grade C	Grade D	Grade F	Drp / Wd	INC
167	68	77	20	0	0	2	0

Passed with C or better: 165

= 99%

Current Qualifying ACT Score

101 = 60%

Current Qualifying ACT Score / Passed 111

99 = 98%

ACT Score / Passed 111

33 = 100%

